

# Internet Explorer Popup Manager

Pop-ups have been misused in many ways. By blocking pop-ups, the Web is safer for our end users, and the customer has more control over their browsing experience.

Pop-up Manager blocks most unwanted pop-up windows from appearing. Pop-up windows that are launched when the end user clicks a link will not be blocked.

End users and IT administrators can let specific domains launch programmatic pop-up windows. Developers will be able to use or extend the pop-up functionality in Internet Explorer for applications hosting Internet Explorer.

For end users, browsing the Web will be safer and less annoying, because unwanted pop-up windows will not automatically appear.

## Features of the Popup Manager

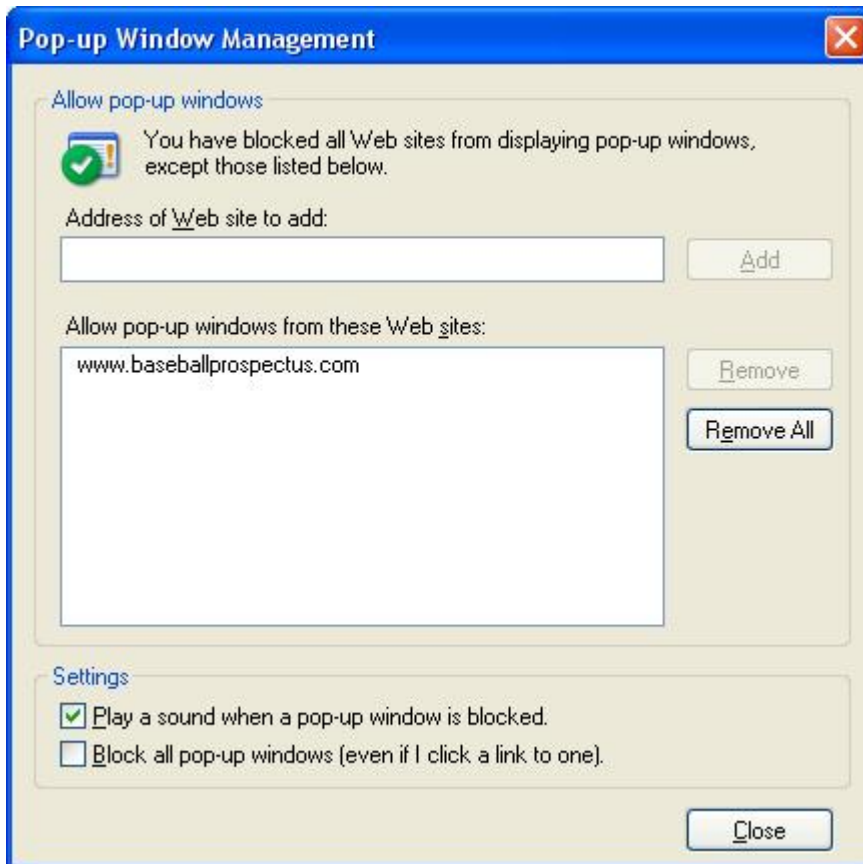
Pop-up Manager is turned off by default. When the pop-up functionality is enabled, automatic and background pop-up windows are blocked in the Internet Zone, but windows that are opened by a user link click will still open in the usual manner (although this too is configurable). Note that sites in the Trusted Sites and Local Intranet zones never have their pop-up windows blocked, as they are considered safe. This can be configured in the **Security** tab in **Internet Options**.

You can enable Pop-up Manager by three different methods.

**1. Prompt at first occurrence.** A prompt appears before the first pop-up window appears that asks the customer to enable Pop-up Manager.

**2. Tools menu.** In Internet Explorer, you can click **Tools**, point to **Pop-up Manager**, and then click **Block Pop-up Windows**.

**3. Internet Options.** In Internet Explorer, you can click **Tools**, click **Internet Options**, click the **Privacy** tab, and then click **Block pop-up windows**. You can then click **Options** to configure Pop-up Manager settings as shown in Figure 14.



**Figure 14: Pop-up Window Management Dialog**

If a site launches a pop-up window that is blocked by Internet Explorer, a notification appears in the status bar and a sound is played. If a user clicks the notification in the status bar, a menu with the following options is presented:

- **Show Blocked Pop-up Window.** Reloads the pop-up window.
- **Allow Pop-up Windows from This Site.** Adds the current site to the Allow list. Sites can be added to this list in a setup application by an administrator.
- **Block Pop-up Windows.** Toggles Pop-up Manager on and off.
- **Pop-up Window Options.** Opens the **Pop-up Window Management** window.

Note that there are new restrictions in Internet Explorer on the size and position of pop-up windows, regardless of the Pop-up Manager setting: Pop-up windows cannot be opened larger than or outside the viewable desktop area.